


schliffprecisionag.com
Business 574.704.3060

mrdparts@schliffprecisionag.com

Ben Schliff

309.202.8156

Milford, IN

Rich Schliff

574.518.4693

Schliff Precision Ag Planter Parts

Over the many years of working on planters, we have developed a local source for quality replacement parts, as well as custom fit solutions for our needs. In this order guide, find commonly used parts, a brief description, and their retail prices.



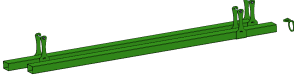

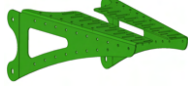


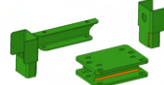


For a more complete description of any parts or kits, feel free to call, email, or check our website. We have more informative sheets for many of these. As we own the design of these parts, we are also able to tweak them for your specific application as well.

Most of these are stocked at our location, as we use them often. If unstocked, common lead times are 4-6 weeks. Prices are subject to change without notice, consult our webpage for most recent published pricing. Feel free to ask about if your dealership qualifies for an additional discount.

Some of these items could be built by your local fab shop. Production prints are available for single use, or annual use - call for more info.

Harness / Hose Routing

Tubes and Loops to assist in routing harnesses and hoses on planters

	Description	Part Number	Price
JD 177x NT			
Strap to clamp around draft tube for assisting in routing harnesses and hydraulic hoses.	Routing Guide Strap 3x5 tube	MRD10283	\$22
Can be used solo or in combination with 2"x3" square tube			
Pin Loop - Routing Loop that installs to rear draft arm pins	Pin Guide - Draft Arm	MRD10285	\$25
			
2" x 3" Square tube, hangs below or above either Left or Right Draft Tube, with straps for securing	Routing Kit - 177Xnt 16r30 or 179X	MRD10286	\$220
Includes 1 Pin Loops			
2" x 3" Square tube, hangs below or above either Left or Right Draft Tube, with straps for securing	Routing Kit - 177Xnt 24r30	MRD10287	\$300
Includes 1 Pin Loops			
Platform for mounting PDM, Alternator, DeltaForce lift manifold to planter.	Mount Kit, PDM and Manifold	MRD10305	\$160
Mounts between 2 John Deere row units on 30" centers using their front parallel arm bolts			
Allows PDM mount to mount to 7x7 frame instead of parallel arms on 30" centers	7x7 adapter Kit - PDM Mount	MRD10462	\$50
			
Raises the CCS platform on CCS 1770nt's by 3" to accommodate better routing options underneath the tanks	CCS Lift - Bracket and Hardware Kit	MRD10552	\$250
			
Mounting plate for -8 ORFS Bulkhead fittings in the center of the planter	Fitting Support - 24row CCS DF Center	MRD10309	\$50
Mounts off of the CCS Platform			

Mounting plate for -8 ORFS Bulkhead fittings in the center of the planter
Mounts off center Vac support bolts on a 16 row

Fitting Support - BOX DF Center



MRD10310 \$40



Kits of Hydraulic Hoses needed to install DeltaForce onto planters. Includes Hoses and fittings that are needed above the PP Base Kit

Hyd Hose Kit - JD 177Xnt ccs 24r30 w/Fert, 5/8" Supply

MRD10401 \$1,700

Hyd Hose Kit - JD 177Xnt 24r30 ccs, 1/2" Supply

MRD10402 \$1,400

Hyd Hose Kit - JD 177Xnt 16r30 Box, 1/2" Supply

MRD10403 \$1,250

Provides protection for running a 2' Fertilizer Hose to the front of the planter.

2" Fert Hose to Tractor Protector - 1775nt 24r30

MRD10367 \$550



Provides protection for running a 2' Fertilizer Hose to the front of the planter.

2" Fert Hose to Tractor Protector - 1770nt 24r30

MRD10437 \$600



2" Fert Hose to Tractor Protector - 1770nt 16r30 Latch Protector - 1770nt (no guides)

MRD10438 \$450

MRD10439 \$200

Harvest International Kits

Adds location to the back of CCS planters for hydraulic bulkhead fittings to be mounted

Hydraulic Bulkhead - Harvest Series 2

MRD10490 \$70



Provides Routing Trays for harnesses, hoses, etc on main fold joints of certain Harvest Planters.

HARVEST WING ROUTING KIT

MRD10390 \$200



Also includes additional clamps if platform needs moved

Liquid Tanks and Saddles / Support

Brackets and tanks designed for specific applications

JD 16 Row 1770NT Wing Tank Kit - 150 per wing

Includes:

(2) 150 Gallon Tanks
Saddles and Mounts for both
Hardware to secure Tanks and
saddles to planter Frame

Each Tank has (2) 1 1/4" ports

Installed tanks set underneath
markers if installed on planter

Compatible with both Mini-hoppers
and Full Size hoppers

Frames that have External Vac

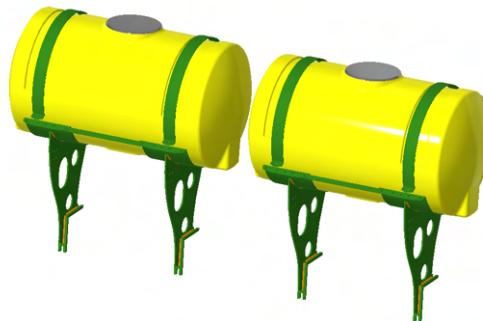
Description

Part Number

Price

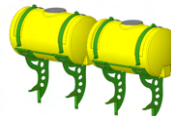
Wing Tank Kit, 150 Gal x 2, JD 1770nt 16r30

MRD10043 \$3,300



Wing Tank Kit - 1775nt 16 2020+ 150 gal

MRD10537 \$3,500



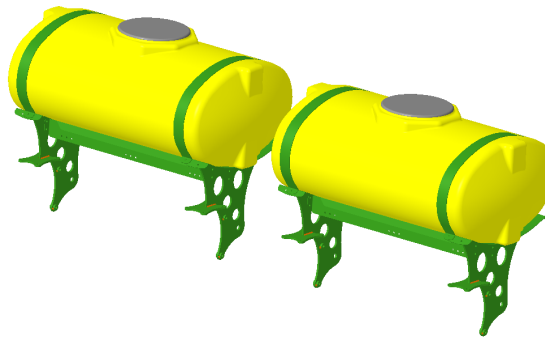
Similar as the MRD10043, but for frames
with Integrated Vac

JD 24 Row 1770NT Wing Tank Kit - 200 per wing

Wing Tank Kit, 200 Gal x 2, JD 1770nt 24r30

MRD10050 \$4,600

Includes:
 (2) 200 Gallon Tanks
 Saddles and Mounts for both
 Hardware to secure Tanks and
 saddles to planter Frame
 Each Tank has (2) 1 1/4" ports
 Includes Overflow port and tube
 Installed tanks set underneath
 High Knee Markers if installed on planter
 Not Compatible with Low Markers
 Not Compatible with full size hoppers



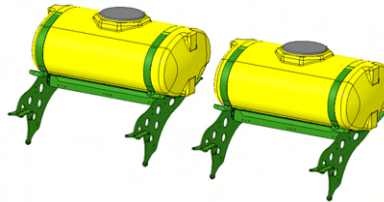
Similar to the MRD10050 (above), but
 set 20" further rearwards to set behind
 low hung markers.

Not compatible with full size hoppers.

Not compatible with 2022 and 2023
 planters with hydraulic downforce or
 exact apply

Wing Tank Kit - JD 24r30 Low Markers & Mini

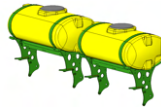
MRD10245 \$5,300



Wing Tank Kit, 200 Gal x 2, JD 1770nt 24r30, High

MRD10269 \$4,800

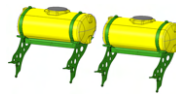
Similar to the MRD10050 (above), but
 set 3" further vertical, and 3" further
 forward to clear full size hopper boxes.



Wing Tank Kit - JD 24r30 Low Markers & Boxes

MRD10410 \$6,400

Similar to the MRD10245 (above), but
 set 8" further vertical to clear full size
 hopper boxes.



JD 1770NT Center Tank

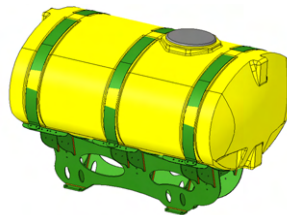
500 Gallon tank and saddle for mounting
 to an 8" center planter frame.

Includes U-Bolts, straps, and hardware
 to mount.

Fits: Most JD 177Xnt Planters
 16r30 Box
 16r30 CCS
 24r30 Box
 24r30 CCS

Tank and Saddle Kit - 500 Gal

MRD10332 \$5,000



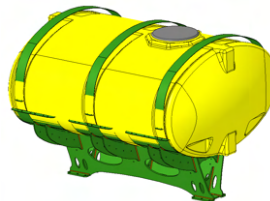
750 Gallon tank and saddle for mounting
 to an 8" center planter frame.

Includes U-Bolts, straps, and hardware
 to mount.

Fits: Some JD 177Xnt Planters
 16r30 Box
 24r30 Box
 24r30 CCS

Tank and Saddle Kit - 750 Gal

MRD10333 \$7,500



Tank Saddle Support Set, JD Center 500 Gal

MRD121217 \$225

14.5" Vertical, 34" x 3" platform

2 Supports are included



U-Bolt 5/8" for 8 x 12 tube, 177Xnt 16row

MRD10258 \$32

U-Bolt 5/8" for 8 x 16 tube, 177Xnt 24row

MRD10259 \$36

AGCO 16r30 Wing Tank Kit - 150 per wing

(2) 150 Gallon Tanks
Saddles and Mounts for both
Hardware to secure Tanks and
saddles to planter Frame

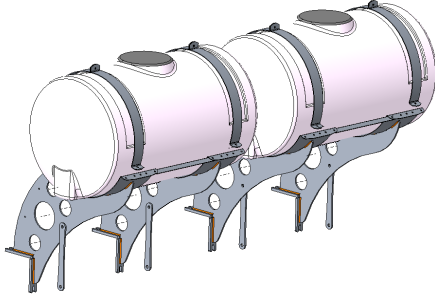
Each Tank has (2) 1 1/4" ports

Installed tanks set behind
markers if installed on planter

Includes overflow port and tube

Compatible with both Mini-hoppers
and NOT Full Size hoppers

Wing Tank Kit - 150 on AGCO 16r30



MRD10341 \$4,000



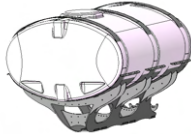
Harvest International Kits

750 Gallon tank and saddle for mounting
to a Harvest Series 2 60 ft Frame

Includes Bolts, straps, and hardware to
mount.

Tank and Saddle Kit - 750 on 60' Series 2 Harvest

MRD10391 \$8,000



750 Gallon tank and saddle for mounting
to a Harvest Series 2 40 ft Frame

Includes Bolts, straps, and hardware to
mount.

Tank and Saddle Kit - 750 on 40' Series 2 Harvest

MRD10518 \$8,000



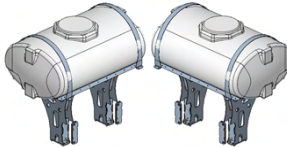
200 Gallon tanks and saddles for
mounting to a Harvest Series 1 or 2 60 ft
Frame

Includes Bolts, straps, and hardware to
mount.

Does NOT fit with Markers

Harvest - 200 Wing Complete Kit

MRD10392 \$5,500

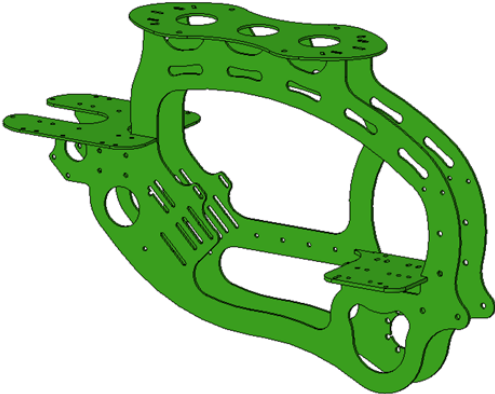


Harvest - 300 Wing Complete Kit

MRD10393 \$6,500

Pump Mounts and Plumbing Supports

Brackets and guides designed for specific installations with universal attachment locations

	Description	Part Number	Price
Universal Pump Mount			
<p>Allows for mounting of Hydraulic Motor to drive John Blue Piston Pump.</p> <p>Allows mounting of single or dual Filter and Accumulator.</p> <p>Accommodates 2" fill and 50 mesh strainer inlet.</p> <p>Accommodates (2) vApplyHD and (1) vApply Pump Control Module.</p> <p>Re-uses JD chain tensioner arm and spring.</p> <p>Outside spacing is 14.5" with 2" fill mounted on side, to allow for mounting between 30" rows</p> <p>Hose from Center 1/2" ORFS Tee Jumpers & Extensions & Hub</p> <p>Use if mounting 1 or 2 remco electric pumps</p>	<p>Elephant Head - Universal w/ platform</p> 	MRD10262	\$620
	Hyd Hose Kit - Elephant Head	MRD10404	\$150
	Elephant Head Can Hub Kit	MRD10431	\$225
	Electric Pump Adapter	MRD10302	\$40



Universal Pump Mount Brackets

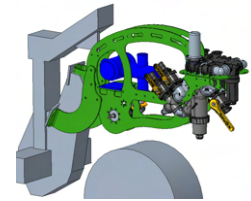
For mounting the Liquid Frame above the outside rear wheel on a 16 row 1770nt or 1775nt. Can be used on right or left side.

Includes Hardware to mount to planter and to Liquid Frame



Elephant Head Mounting Kit - 1770nt 16 Row

MRD10231 \$270



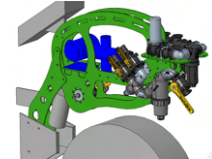
For mounting the Liquid Frame above the outside rear wheel on a 24 row 1770nt or 1775nt. Can be used on right or left side.

Includes Hardware to mount to planter and to Liquid Frame



Elephant Head Mounting Kit - 1770nt 24 Row

MRD10232 \$230



Universal Pump Mount Brackets

For mounting the Liquid Frame above the outside rear wheel on a 16 row AGCO Bar. Can be used on right or left side.

Includes Hardware to mount to planter and to Liquid Frame



Elephant Head Mounting Kit - AGCO 16 Row

MRD10335 \$270



For mounting the Liquid Frame on a 7 x 7 frame. Spacing can be up to 10.5" wide, or as narrow as 5" Extends 55" rear of 7x7, 27" above top.

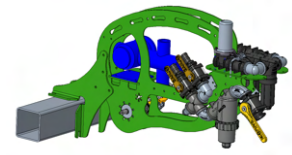
Includes Hardware to mount to planter and to Liquid Frame

Alternative spacings are available



Elephant Head Mounting Kit - 7x7 Universal

MRD10233 \$250



For mounting the Liquid Frame on a 7 x 7 frame. Spacing can be wide as 12", or as narrow as 5" Extends 57" rear of 7x7, 40" above top.

Provides Clearance for Factory Vac Tubes



Elephant Head Mounting Kit - 7200 or 1770 con

MRD10524 \$400

For mounting the Liquid Frame on a 7 x 7 frame. Spacing can be wide, or as narrow as 5" Extends 55" rear of 7x7, 39" above top.

Includes Hardware to mount to planter and to Liquid Frame

Alternative spacings are available



Elephant Head Mounting Kit - 7x7 High Universal

MRD10273 \$400

For mounting the Liquid Frame on a Harvest Series 2 frame.

Includes Hardware to mount to planter and to Liquid Frame

Includes (1) MRD10491 Light Relocate Bracket as well



Elephant Head Mount Bracket Set - Harvest Series 2

MRD10489 \$350

Other Pump / Motor Mounts

Allows a second piston pump to be mounted on a factory ground drive piston pump transmission

Dual Fert pump mount - NT

Part Number Price

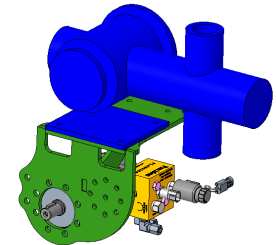
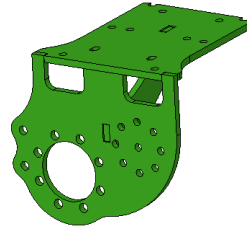
MRD20020 \$80

Piston Pump Mount - 1770nt

MRD10055 \$150

Allows a piston pump to be mounted directly above the factory hydraulic seeding drive motor. Accommodates most NGP pumps

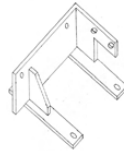
No Hardware Included



Liquid Pump Mount, Surefire Tower

MRD40020 \$50

Allows a surefire tower to be mounted to a 7x7 planter frame



Hyd Motor Mount - JD Factory Ground Drive Pump

MRD10056 \$50

Allows a hydraulic drive motor to be mounted to the ground drive liquid fert frame on a 1770nt and 1760

No Hardware Included



vApplyHD Mounts and Plumbing Guides

Brackets designed for specific applications

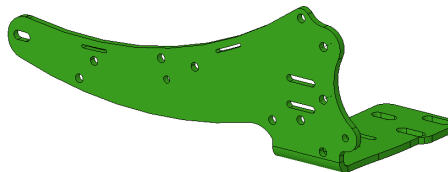
On-Row vApplyHD Mounts

Allows for mounting of a CAN Expansion Hub at the rear of the row unit. Provides mounting for vApplyHD, CAN FlowSense, EM FlowSense, or HD2. Has slots for improved harness and tube routing to rear of row unit for FurrowForce or SmartDepth.

No Hardware is included

Routing Guide - Banana Bracket

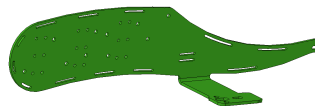
MRD10151 \$35



Routing Guide - Hen

MRD10433 \$90

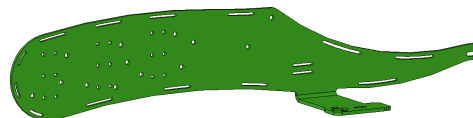
Allows for mounting of a CAN Expansion Hub at the rear of the row unit. Provides mounting for 1-2 vApplyHD, CAN FlowSense, EM FlowSense, or HD2.



Routing Guide - Peacock

MRD10421 \$110

Allows for mounting of a CAN Expansion Hub at the rear of the row unit. Provides mounting for 3-4 vApplyHD, CAN FlowSense, EM FlowSense, or HD2.



Post Spacer, 1/4" JD Rear Support W/Attachment

MRD10149 \$6

Allows for easy securement of hoses or harnesses on the rear of the row unit

No hardware Included

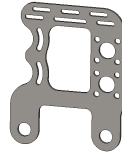


Allows for easy securement of wet boom and harnesses to front of parallel arms.

Secures to W-Mount bolt, provides centered placement or 4" offset

No hardware Included

Fitting Support - W-Mount - Schoolbus



MRD10416 \$13

Section Control vApplyHD Mounts

Allows for mounting of (1) vApplyHD and (1) wet booms. Mounts off the hex-shaft location of a W-plate. Can be mounted to either side as needed.

No hardware is included, see below

Rocketship - Single JD



MRD10128 \$24

Allows for mounting of (2) vApplyHD and (2) wet booms. Mounts off the hex-shaft location of a W-plate. Can be mounted to either side as needed

No hardware is included, see below

Rocketship - Dual JD



MRD10104 \$30



Allows for mounting of (1) HD2, (1) EM FS and (1) wet booms. Mounts off the hex-shaft location of a W-plate. Mounts to the Left side of a row unit

No hardware is included, see below

Land Rover - EM HD Single



MRD10471 \$35

Allows for mounting of (2) HD2, (2) EM FS and (2) wet booms. Mounts off the hex-shaft location of a W-plate. Mounts to the Left side of a row unit

No hardware is included, see below

Land Rover - EM HD Dual



MRD10444 \$45

Allows for mounting of (3) vApplyHD2's and (3) EM Flowsense and (3) wet booms.

Mounts directly to the 7x7 frame, with a width of 11.5" Extends 12.5" above top of 7x7 frame. Sets 6" rearward

Use with the MRD10128 or MRD10104 to offset rearward or sideways.

This is valuable on planters with frame changes around wing flex and fold points

Land Rover - EM HD Triple - 7X7 Mount, 9" offset



MRD10472 \$120

Offset Bracket - Rocketship



MRD10301 \$12

Allows for mounting of (2) vApplyHD and (2) wet booms.

Mounts directly to the 7x7 frame, with a width of 8.5"

Rocketship - Dual 7x7



MRD10204 \$60

Allows for mounting of (3) vApplyHD and (3) wet booms.

Mounts directly to the 7x7 frame, with a width of 8.5" Extends 12.5" above top of 7x7 frame.

Rocketship - Triple 7x7



MRD10415 \$85

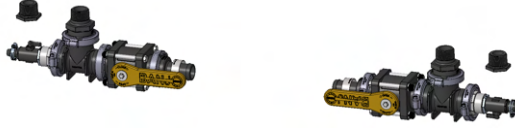



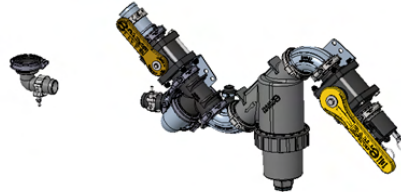
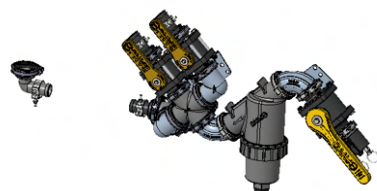
Hardware for mounting (1) vApplyHD and (1) Boom Fitting to the MRD10028 & MRD10104 Mounting Plates

Hardware Kit, HD and Boom Fitting

MRD10150 \$3

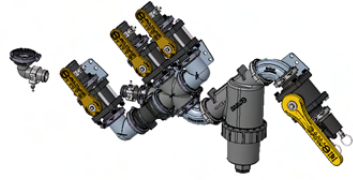
General Planter Plumbing Fitting Kits

Fittings, clamps, seals, U-bolts commonly used

	Description	Part Number	Price
Tank Port Plumbing			
	Plumbing Kit - Wing Tank Set, 16r30 - 1 1/2"	MRD10221-16	\$475
	Plumbing Kit - Wing Tank Set, 24r30 - 1 1/2"	MRD10221-24	\$525
Single 1 1/4" port fittings for wing tanks Valve at bottom of tank 1 1/2" hose included (50' for 16row, 70' for 24) 3/4" Drain valves and hoses included			
	Plumbing Kit - Center Tank - 2"	MRD10222	\$250
Single 2" port fittings for center tank Valve at bottom of tank 25' of 2" hose included 3/4" Drain valves and hoses included			
Same as MRD10222, but 3" Includes 3" tank flange	Plumbing Kit - Center Tank - 3"	MRD10558	\$550
Accumulator, Filter & Distribution Plumbing - Similar to PP Essentials, Filter, and the manifold half of the Section Kits			
	Plumb Kit - Dual Acc, Filter & 3 Frame Dist - 16r30	MRD10223-16	\$875
2" flange at pump to Accumulator, dual 80 mesh filters, 1" distribution to wings, 3/4" wet boom connections, 1" relief, (3) 1/4" PTC pressure Taps, Visual Gauge, Garden Hose Flush	Plumb Kit - Dual Acc, Filter & 3 Frame Dist - 24r30	MRD10223-24	\$930
EPDM hose included (High Flow, > 15gpa)			
	Plumb Kit - Single Acc, Filter & 3 Frame Dist - 16r30	MRD10224-16	\$650
2" flange at pump to Accumulator, single 80 mesh filters, 3/4" distribution to wings, 1/2" wet boom connections, 1" relief, (3) 1/4" PTC pressure Taps, Visual Gauge, Garden Hose Flush	Plumb Kit - Single Acc, Filter & 3 Frame Dist - 24r30	MRD10224-24	\$690
EPDM hose included (Low Flow, < 15gpa)			
Fill, Filter, & Pump Inlet Plumbing			
	Plumb Kit - 2" Fill, Filter, Pump Inlet, 1 tank	MRD10225	\$630
2" Male Cam Inlet with cap, 2" Full Port 50 mesh filter, 2" hose barb to single tank, 1 1/2" hose to pump inlet, 1" hose barb for relief inlet			
Suction hose to pump included Filter Wrench Included Can swap to 1 1/2" plumbing to pump or tank as needed	Plumb Kit - 3" Fill, Filter, 1 Tank (3")	MRD10557	\$1,250
	Plumb Kit - 2" Fill, Filter, Pump Inlet, 2 tanks	MRD10226	\$755
2" Male Cam Inlet with cap, 2" Full Port 50 mesh filter, 1 1/2" hose barb to two tanks, 1 1/2" hose to pump inlet, 1" hose barb for relief inlet			
Suction hose to pump included Filter Wrench Included Can swap to 2" plumbing to pump or tanks as needed	Plumb Kit - 3" Fill, Filter, 2 Tanks (3" & 2")	MRD10556	\$1,400
	Plumb Kit - 2" Fill, Filter, 2 tanks W/Checks	MRD10554	\$950
	Plumbing Kit - 2 Tank Electric Selector Kit	MRD10493	\$1,570

2" Male Cam Inlet with cap, 2" Full Port 50 mesh filter, 1 1/2" hose barb to three tanks, 1 1/2" hose to pump inlet, 1" hose barb for relief inlet

Suction hose to pump included
Filter Wrench Included
Can swap to 2" plumbing to pump or tanks as needed



Plumb Kit - 2" Fill, Filter, Pump Inlet, 3 tanks MRD10227 \$860

Plumb Kit - 2" Fill, Filter, 3 tanks W/Checks MRD10555 \$1,150
Plumbing Kit - 3 Tank Electric Selector Kit MRD10494 \$2,500

Rinse Tank Plumbing

15 Gallon ATV Sprayer & Rinse Tank for Universal Pump Platform

Also available in White



Yellow Rinse Tank MRD10282 \$220

1" Tank Flange, 1" clear hose to Valve at pump Inlet

Tank Flange can be swapped for T's or Garden hose adapter as needed



Plumbing Kit - Rinse Tank Flush MRD10228 \$140

3/4" Cam to valve, 1" clear hose to tank

Tank Flange can be swapped for T's or garden hose adapter as needed

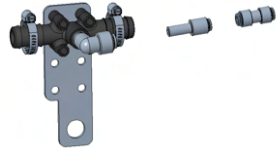


Plumbing Kit - Rinse Tank Fill MRD10229 \$85

Boom / Final Distribution Plumbing - Note, Furrow Jet or Conceal Splitters NOT included

Boom fitting & clamps
PTC 90, coupler, & reducer
Black EPDM Hose between rows,
colored PTC tubing on row

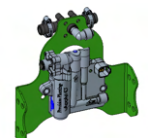
Does NOT include: Schoolbus, HD, HD mount, splitter for FJ or Conceal



Plumbing Kit - Row by Row HD MRD10234 \$45

Boom fitting & clamps, PTC 90
colored PTC tubing before row splitters

Does NOT include: HD or RocketShip
Use with MRD10236, below



Plumbing Kit - Section per HD MRD10235 \$35

PTC Splitter W/Check valves,
PTC reducer & couplers
colored PTC tubing after splitters

Does NOT include: FlowSense
Use with MRD10235, above



Plumbing Kit - Section per Row MRD10236 \$50






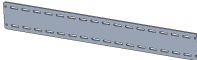






1" Hose Inlet, 2 even split visagauge sets, 3/8" PTC to row, Sprayer style check valves, single pressure gauge



Plumbing Kit - VisaGauge per Row MRD10237 \$60

General Planter Plumbing Components

Supporting Hardware for Installations

	Description	Part Number	Price
Banjo Valve Mounts & U-Bolts			
	Valve Mount - Banjo 90deg 0.80 offset	MRD10108	\$9
Mount for a 1.5" or 2" Banjo valve. Stainless Steel			
Bolt center is 0.80" from far side.			
	Valve Mount - Banjo straight	MRD10109	\$9
Mount for a 1.5" or 2" Banjo valve. Stainless Steel			
	Valve Mount - Banjo 90deg 1.85 offset	MRD10110	\$9
Mount for a 1.5" or 2" Banjo valve. Stainless Steel			
Bolt center is 1.85" from far side.			
5/16" U-Bolt, 3.5" Length Stainless Steel	U-Bolt - 2" (1.5") Flange Fitting	MRD10126	\$5
5/16" U-Bolt, 4" Length Stainless Steel	U-Bolt - 2" Full Port Flange	MRD10127	\$6
	Filter Wrench, 1 1/2", 2"	MRD10205	\$40
Wrench for Banjo Filter			
	Orifice Set - Triple	MRD10267	\$4
Use with PP triple splitters. Provides no backpressure, but provides thickness to seal.			
	VisaGage Plate - 16	MRD10442	\$60
Provides Mounting Location for John Guest Visa-Gages. Supports up to 16			
	VisaGage Plate - 12	MRD10443	\$50
Provides Mounting Location for John Guest Visa-Gages. Supports up to 12			
	VisaGage Mount Arm Set - 500 & 750 saddle	MRD10461	\$70
Provides Mounting for VisaGage Plate on front of Factory JD 450 or 650 Saddles, or SPA 500 or 750			
	VisaGage bracket - 24row wing -SET	MRD10484	\$80
Provides Mounting for VisaGage Plate on wings of 24 row 1770nt's			
	Flow Meter Mount, planter wide	MRD10268	\$35
Provides Mounting Location for Planter Wide MicroTrak Flow Meter. Can be mounted to various platform step bolts.			
	Alignment Plate - FurrowForce Dribble Tube	MRD10414	\$15
Ensures the alignment of the PP dribble tubes on FurrowForce			
	FF Rock Bulldozer - Big	MRD10468	\$20
Slightly Wider Rock Bulldozer			

Misc

Description	Part Number	Price
Air Compressor Upgrade Kit - JD to Stand Alone	MRD10550	\$300.00

Bracket, Wiring, and plumbing pieces to turn a JD Electric Compressor and Tank into similar performance as a PP CleanSweep Compressor. Supply Power with 2 Pin Apex

AirForce / DeltaForce Bracket Adaptations

Description	Part Number	Price
Replaces the OEM W-Mount and Parallel arms to allow a PP dual Airbag system to be installed. Includes new upper and lower arms, and all bolts & bushings. Includes the cost of powder coating a PP Bracket set if required, but does not include the PP Kit W-Plate from above kit - use if Parallel arms and bushings are in good shape	AirForce Bracket Set - Cobra on Kinze / JD 7000 	MRD10219 \$305.00
	Row Unit W-Mount, Kinze or JD 7000W/ Dual Airbags	MRD10010 \$70.00
Replaces the OEM W-Mount and Parallel arms to allow a DeltaForce Cylinder to be installed. Includes new upper and lower arms, and all bolts & bushings. If Upper arms & bushings are good - we can remove those parts for a deduct.	DeltaForce Bracket Set - Kinze / JD 7000 	MRD10220 \$350.00



vSet Select Adaptations

Description	Part Number	Price
Kit - vSet Select on Kinze 3000	MRD10217	\$135.00
Kit - vSet Select on Kinze 2000	MRD10218	\$153.50

Replaces the OEM Kinze side pannels with unique geometry to accomidate a vSetSelect Hopper


Custom Adapters

One-off custom designed adapters

Description	Part Number	Price
Hopper Support, Front JD 1.6 on Twin Row Allows a standard hopper to be mounted onto a twin row row unit Require adequate spacing to left and right.	 MRD10035	\$155
Yetter row cleaner ext (single wheel) Extends a row cleaner arm, to allow for a single wheel more centered	 MRD20007	
PDM, Manifold Mount, JD 24Row NT	MRD010818	\$60